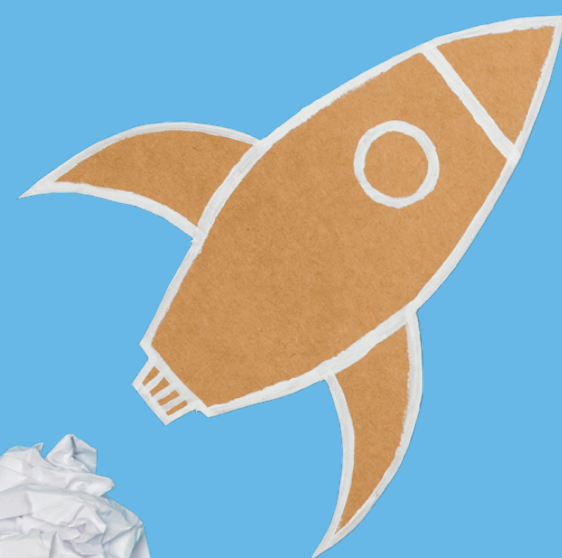


Gender aware enterprise support

*Female Future: round table with
international female founders, March 2025*



Scottish context

- **Businesses majority-owned by women contribute £8.8bn to economy and 231k jobs**
- **Roughly half of the early stage entrepreneurs were women in 2023,**
- **However overall, only 20% business base is women-owned**
- **Support for women's entrepreneurship: 'less than satisfactory, scoring under three out of ten'**



Sources: Global Entrepreneurship Monitor Scotland 2023-24 Report 2024; Women's Enterprise Scotland; The Alison Rose Review of Female Entrepreneurship 2019;

Opportunities

- **World Economic Forum says 'women entrepreneurs bring diverse perspectives, foster inclusive leadership, and often develop solutions addressing social and environmental challenges'**
- **71% of social enterprises in Scotland are run by women; 55% social enterprise board members are women**
- **Government interest in women's enterprise in Scotland and UK**



Sources: Advancing gender parity in entrepreneurship: strategies for a more equitable future, World Economic Forum 2025; Social Enterprise in Scotland Census 2021



SUSTAINABLE DEVELOPMENT GOALS

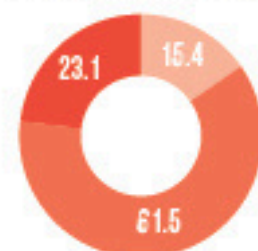




ACHIEVE GENDER EQUALITY AND EMPOWER ALL WOMEN AND GIRLS

THE WORLD IS
NOT ON TRACK TO ACHIEVE
GENDER EQUALITY BY 2030

OUT OF GOAL 5 INDICATORS:



"ON TRACK"
AT A MODERATE DISTANCE
FAR OR VERY FAR OFF TRACK

AT THE CURRENT RATE, IT WILL TAKE



300 YEARS
TO END CHILD
MARRIAGE



286 YEARS TO CLOSE GAPS
IN LEGAL PROTECTION AND
REMOVE DISCRIMINATORY LAWS



140 YEARS TO ACHIEVE
EQUAL REPRESENTATION IN
LEADERSHIP IN THE WORKPLACE

LEGISLATED GENDER QUOTAS
ARE **EFFECTIVE** TO ACHIEVE
EQUALITY IN POLITICS

WOMEN'S REPRESENTATION IN PARLIAMENT
[2022]



30.9%

21.2%



NEARLY HALF OF MARRIED WOMEN
LACK DECISION-MAKING POWER
OVER THEIR SEXUAL AND
REPRODUCTIVE HEALTH AND RIGHTS

1 IN 5 YOUNG WOMEN

ARE MARRIED
BEFORE THEIR 18TH BIRTHDAY

THE WORLD IS
NOT ON TRACK TO ACHIEVE
GENDER EQUALITY BY 2030

OUT OF GOAL 5 INDICATORS:



"ON TRACK"
AT A MODERATE DISTANCE
FAR OR VERY FAR OFF TRACK

AT THE CURRENT RATE, IT WILL TAKE



300 YEARS
TO END CHILD
MARRIAGE



286 YEARS TO CLOSE GAPS
IN LEGAL PROTECTION AND
REMOVE DISCRIMINATORY LAWS



140 YEARS TO ACHIEVE
EQUAL REPRESENTATION IN
LEADERSHIP IN THE WORKPLACE

LEGISLATED GENDER QUOTAS
ARE **EFFECTIVE** TO ACHIEVE
EQUALITY IN POLITICS

WOMEN'S REPRESENTATION IN PARLIAMENT
[2022]



30.9%
COUNTRIES
APPLYING QUOTAS

21.2%
COUNTRIES
WITHOUT QUOTAS



NEARLY HALF OF MARRIED WOMEN
LACK DECISION-MAKING POWER
OVER THEIR SEXUAL AND
REPRODUCTIVE HEALTH AND RIGHTS

1 IN 5 YOUNG WOMEN

ARE MARRIED
BEFORE THEIR 18TH BIRTHDAY



GLOBAL GENDER GAP REPORT



**GENDER PARITY
IS 131 YEARS AWAY.**



**Bright Red
Triangle**



**Queen Margaret
University**
EDINBURGH



Empowering Your **Entrepreneurial** Journey

Access advice, tools, resources, and opportunities. From expert advice and funding to co-working spaces, global networks and more...



Unlimited Business Advice

Our team bring a wealth of knowledge and are here to guide you every step of the way.

1000s of entrepreneurs supported

Every year, we empower hundreds of students, alumni, and staff to turn their ideas into thriving businesses.

Funding Opportunities

Access discretionary funding, pitch competitions, and innovation challenges with cash prizes to help fuel your entrepreneurial journey.

1000+ Freelancers upskilled

Through our Freelance Academy, more than 1,000 individuals have gained the skills and confidence to succeed.

SDG5 Living Lab for Gender Equality

Supporting women and non-binary individuals in developing leadership and enterprise skills as part of our commitment to the Global Sustainability Goals.

5 GENDER
EQUALITY



 **WOMEN'S**
ENTERPRISE SCOTLAND

Free Co-Working Spaces

Bring your laptop and hotdesk in our vibrant co-working spaces. Enjoy a collaborative environment to work, network, and grab a coffee with the team—no office rental needed.



Global Networks

Collaborate with international partners and participate in programs like the Academic Programme for Entrepreneurship and Start for Future to gain global experience.



GET
STARTED
WITH **BRT**





Nick Fannin
Head of Enterprise



Emma Ives
Enterprise Manager



Liza Sutherland
Enterprise Manager

Pete Mclean
Enterprise Manager



Kendra Byers
Business Engagement &
Communications Manager



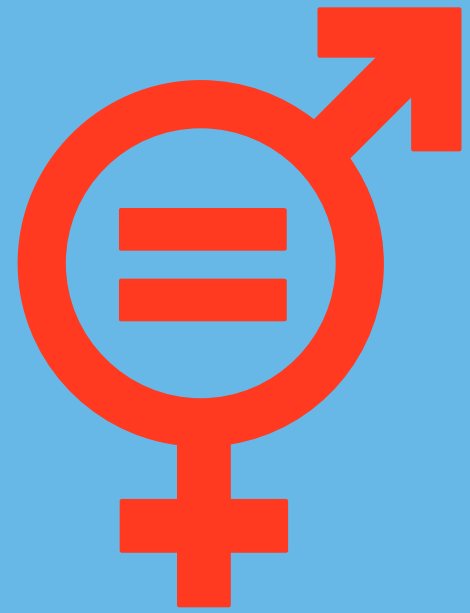
Amber Isaacs
Co-ordinator



Wendy Wu
Enterprise Manager



MEET OUR TEAM



SDG5 Living Lab

Edinburgh Napier
UNIVERSITY



Bright Red
Triangle



WOMEN'S
ENTERPRISE SCOTLAND

brightredtriangle.co.uk/sdg5-living-lab



What is a **Living Lab** ?

- **Focused on collaboration, co-creation, live-testing and data-informed approaches**
- **Connecting a wide range of stakeholders at local, national or international level to address challenges**
- **Linked with the United Nations Sustainable Development Goals**






The background is a solid blue color. It is decorated with numerous white icons representing gender equality. Each icon consists of a circle containing an equals sign (=). To the right of the circle is a cross (female symbol) and to the left is an arrow (male symbol). These icons are scattered across the entire background, some overlapping the red text box.

Advancing gender equality




- **Training**
- **Amplifying**
- **Funding**
- **Collaboration**

Supporting women to start and lead businesses

-  Business Creation
-  July-August 2024
-  Online



Supporting women to develop in leadership

-  Leadership course
for women
-  Starting 22nd May 2024
-  Four in-person sessions
in May, June, Sept/Oct



TRAILBLAZERS

**Design-thinking for enterprising
women and gender minorities**



Be guided by specialists, inspired by entrepreneurial women, all whilst developing your skills in establishing a business or community venture.

**APPLY
NOW**



THURSDAYS, 10AM-12NOON FROM 30TH JANUARY TO 13TH MARCH

Advancing gender equality

An important aspect of our SDG5 Living Lab is amplifying the incredible research and activity taking place within our community.

This page is a work in progress and we would welcome anyone who would like to share their work here.

share your work with us



Dr Amy Beddows

Amy is a therapist in the Student Counselling and Mental Wellbeing Service at Edinburgh Napier University, as well as a researcher in the field of gender-based violence, with a PhD in women's experiences of victim blame.

Some recent work explores the ways that media can be therapeutically meaningful for survivors of gender-based violence.

Read More



Dr Phiona Stanley

Phiona is Associate Professor, Intercultural Business Communications at Edinburgh Napier University. Her broad focus is on how culture operates, with particular interest in gender, embodiment, and other normative 'rules'.

In 2022 Routledge published her latest book 'An Autoethnography of Fitting In On Spinsterhood, Fatness, and Backpacker Tourism'.

Read More

Case studies

Discretionary fund

**Discretionary fund for women and
non-binary entrepreneurs**

[Apply now](#)

[Ask a Question](#)



Collaboration and co-creation



What **next** ?

- **Expanding our case studies (get in touch!)**
- **Collaborating with new partners (get in touch!)**
- **Increasing our work in social entrepreneurship**
- **Expanding our work with other under-represented founders**



Get in touch

e.ives@napier.ac.uk

brightredtriangle.co.uk/sdg5-living-lab

Edinburgh Napier
UNIVERSITY



Bright Red
Triangle



Queen Margaret
University
EDINBURGH

Edinburgh
College